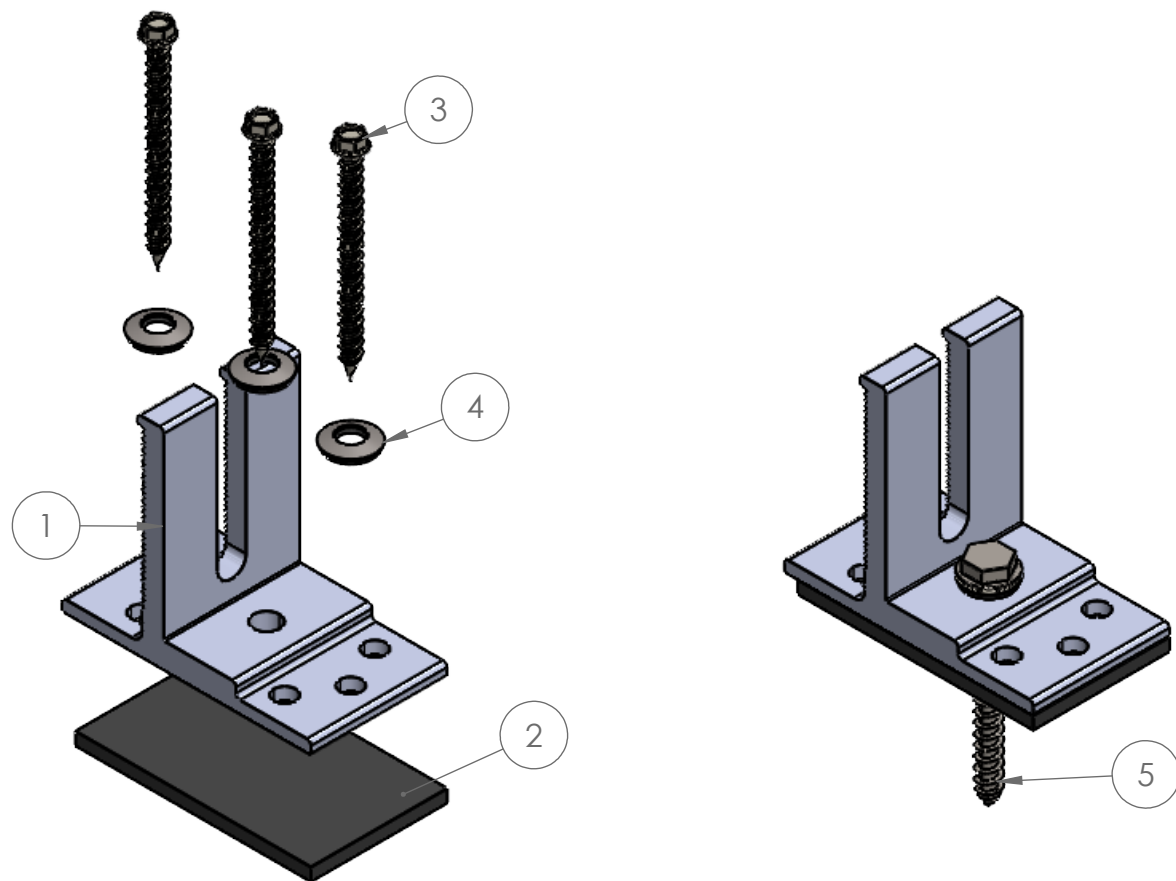
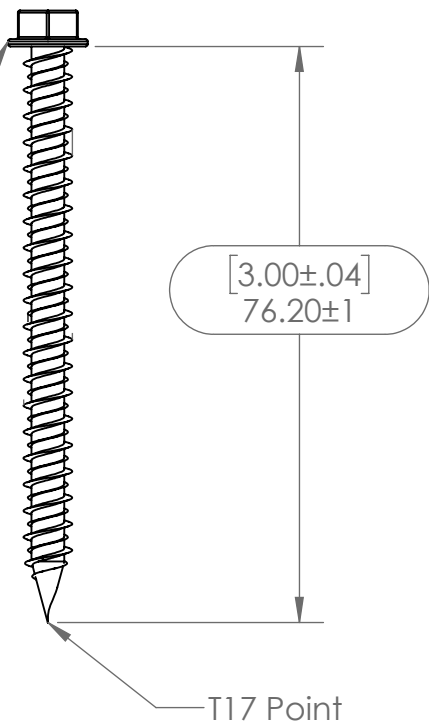
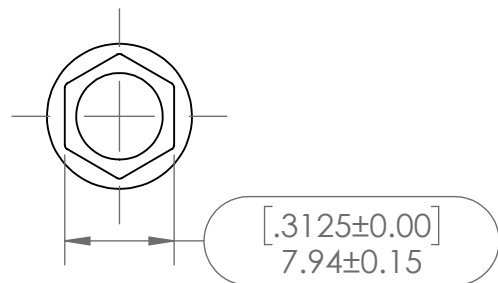


EPDM Washer must be pushed all the way to the top, just under the screw head during the assembly. The gap between the washer and the head of the screw shouldn't exceed 5mm. The metal surface of the washer should face the head of the screw and the EPDM at the tip.



ITEM NO.	PART NUMBER	DESCRIPTION	QTY.	Alloy
1	4000283	K2 Multi Mount, Dark	1	6061-T6, 6005A-T5, 6005A-T61
2	4000281	Multi Mount Butyl	1	N/A
3	4000310	#14 x 3in x 0.3125in Hex Head Screw	3	18-8 stainless Steel
4	4000310	EDPM Shore Washer	3	EPDM Shore A 77
5	4000358	K2 Lag Screw 5-16in x 3in, Hex Head 13mm	1	18-8 stainless Steel

MULTI MOUNT FOR TILE ROOF MOUNTING (IN RAFTER)

2 Types of configurations:

▷ (3) 4000310 - #14 x 3in x 0.3125in Hex Head Screw, EMBED FULLY INTO RAFTER

▷ (1) 4000358 - K2 Lag Screw 5-16in x 3in, Hex Head 13mm - EMBED FULLY INTO RAFTER

MINIMUM DECK = 15/32"

REFER TO K2 ENGINEERING CHARTS FOR APPLICABLE CROSSRAIL SPANS

TO USE IT AS A RAIL SPLICE, THE DISTANCE TO THE NEXT MULTI MOUNT MUST BE EQUAL OR LESS THAN THE MAX ALLOWABLE ATTACHMENT SPAN PER K2 ENGINEER CHARTS

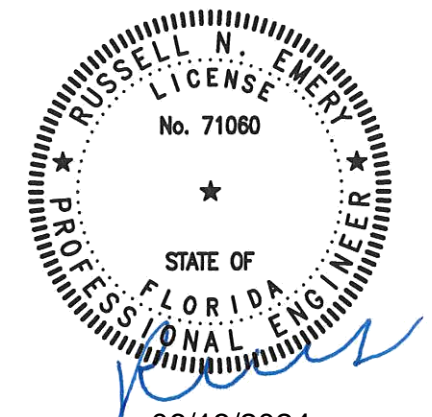
▷ NO PILOT HOLE REQUIRED FOR SELF DRILLING SCREWS

▷ REFER TO K2 CROSSRAIL INSTALATION MANUAL FOR HARWARE TORQUE

STRUCTURAL MEMBER SPECIFICATIONS:

- MINIMUM WOOD GRADE = SPF #2
- SPECIFIC GRAVITY= 0.42
- MINIMUM FASTENER EDGE DISTANCE = 0.375"
- MINIMUM FASTENER END DISTANCE = 1.4

	3 Screws	1 lag screw
ALLOWABLE FASTENER	RAFTER	RAFTER
UPLIFT	1020 lbs	783 lbs
LATERAL	481 lbs	368 lbs



06/13/2024
 Russell N. Emery
 No. 71060
 VSE Project Number: U6022.0009.242

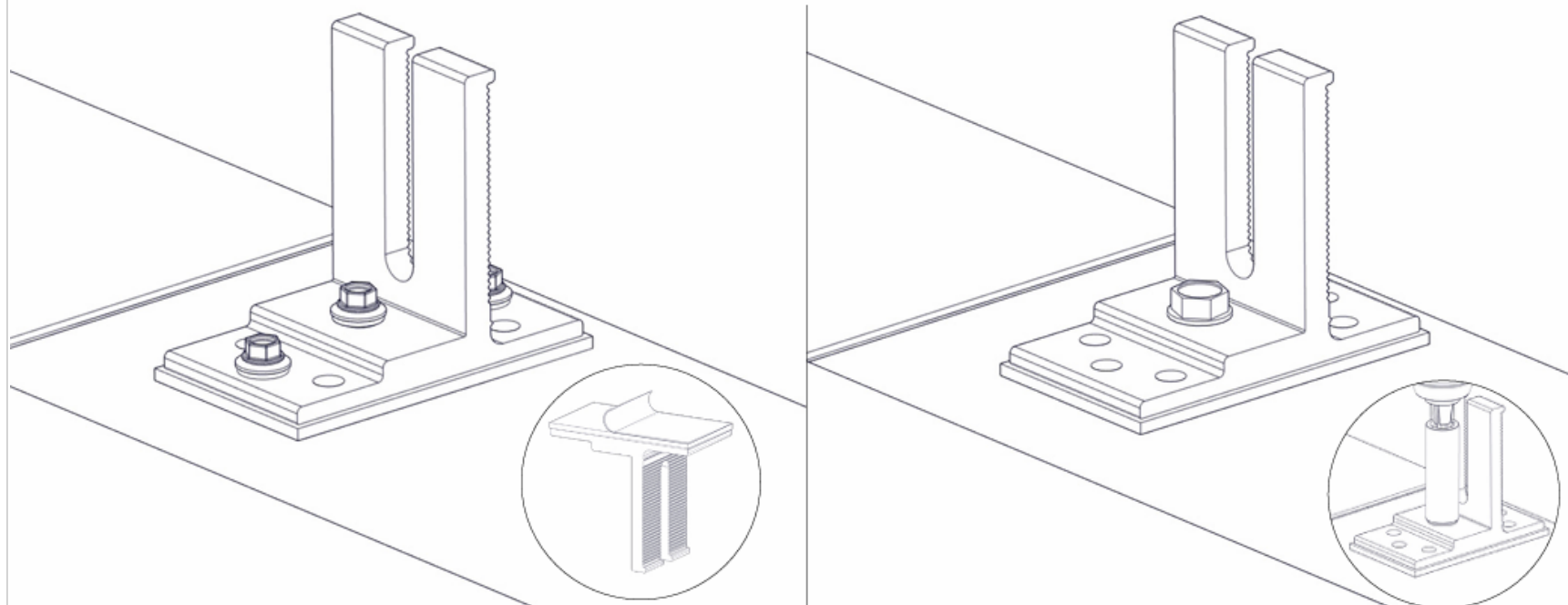
K2 systems
 K2 Systems
 3809 Ocean Ranch Blvd. Suite 111
 Oceanside, CA 92056
 phone 760.301.5300

Description:
 MULTI MOUNT ASSEMBLY

REVISION	DATE	DESCRIPTION	DRAWN BY
A	1/30/24		A. VIZCARRA

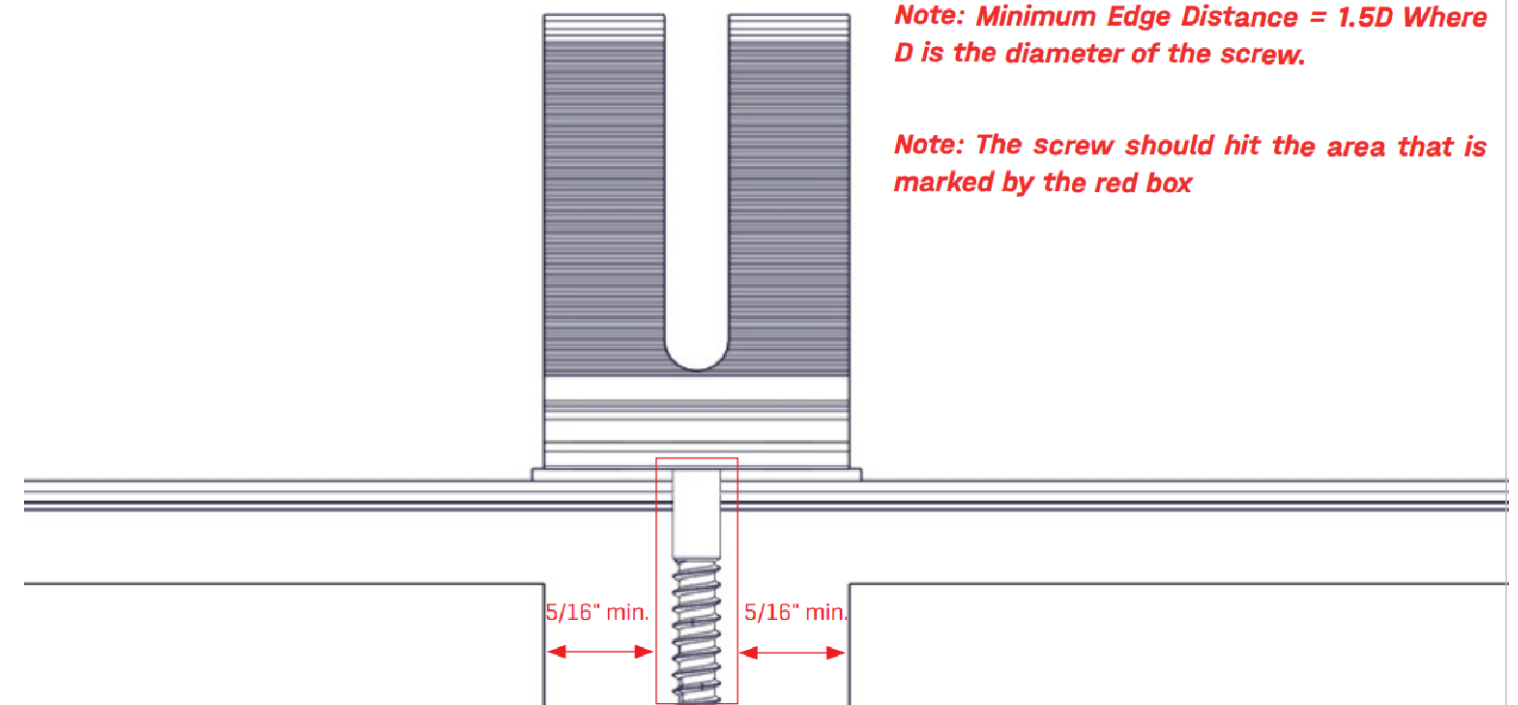
Project:
 Miami Dade County NOA

- 1 Locate the rafter and clean roofing surface for mount placement. Peel back protective paper from butyl and stick down mount on a single shingle course with the center hole lining up over the rafter. Position all mounts in the same direction with the long side towards the ridge. Drive chosen lag screws into the rafter until the conical washer stops rotating, providing a positive seal. Do not over-torque. It should be tightened until the conical washer stops rotating. For rafter attach there are three different configurations to ensure a proper installation of the mount.



! The distance from the edge of the rafter and the wood screws must be at least 5/16" from the edge.

RUSSELL N. EMERY
 LICENSE No. 71060
 STATE OF FLORIDA
 PROFESSIONAL ENGINEER
 06/13/2024
 Russell N. Emery
 No. 71060
 VSE Project Number: U6022.0009.242



K2 Systems
 3809 Ocean Ranch Blvd. Suite 111
 Oceanside, CA 92056
 phone 760.301.5300

Description:
 MULTI MOUNT ASSEMBLY

REVISION	DATE	DESCRIPTION	DRAWN BY
A	1/30/24		A. VIZCARRA
SHEET 11 OF 17			

Project:
 Miami Dade County NOA